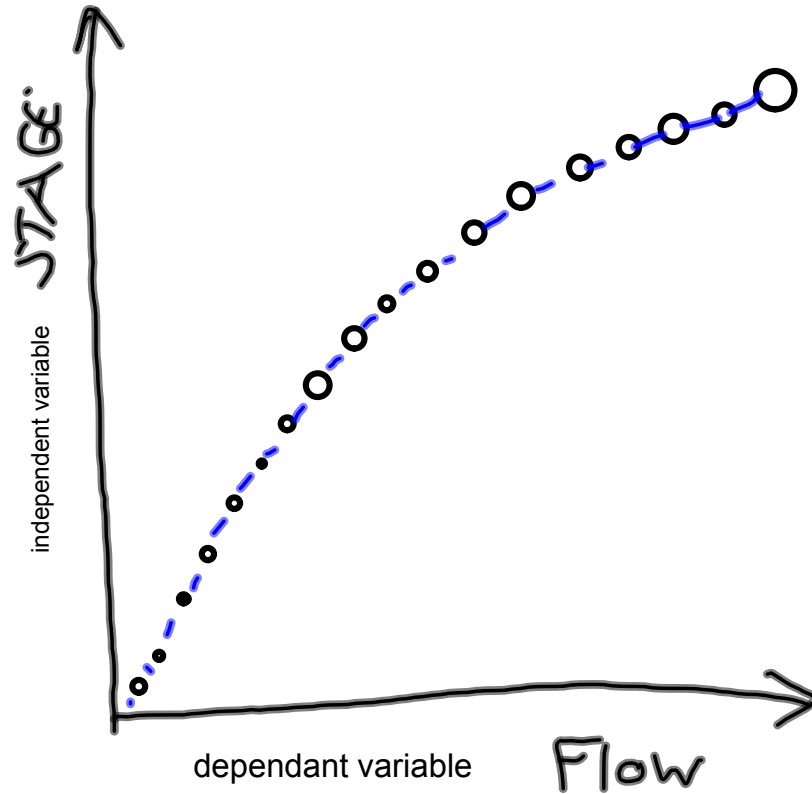


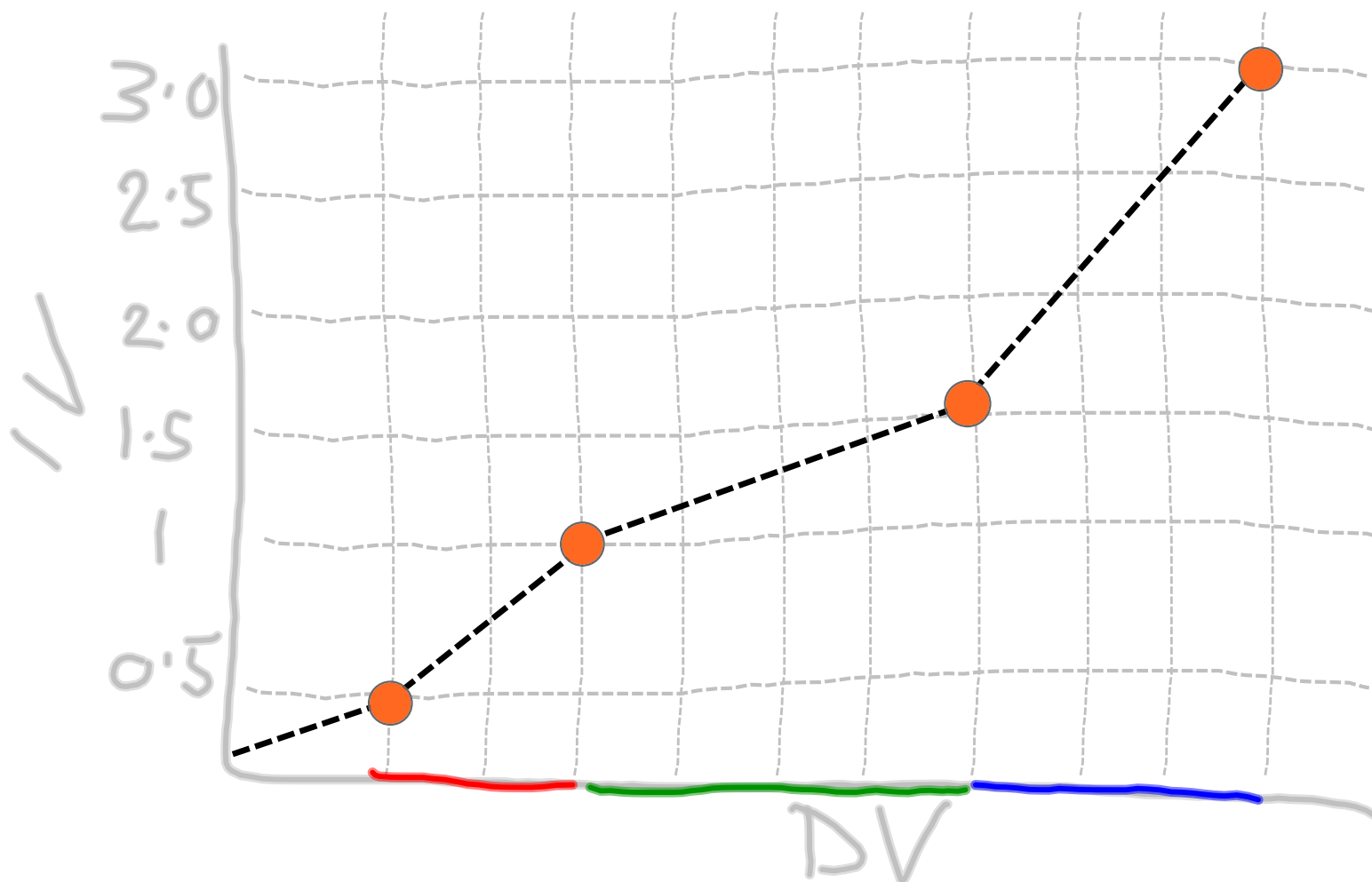
# CONVERSIONS



| IV | DV | ATTRIBS. |  |  |
|----|----|----------|--|--|
|    |    |          |  |  |
|    |    |          |  |  |
|    |    |          |  |  |
|    |    |          |  |  |
|    |    |          |  |  |
|    |    |          |  |  |
|    |    |          |  |  |
|    |    |          |  |  |
|    |    |          |  |  |

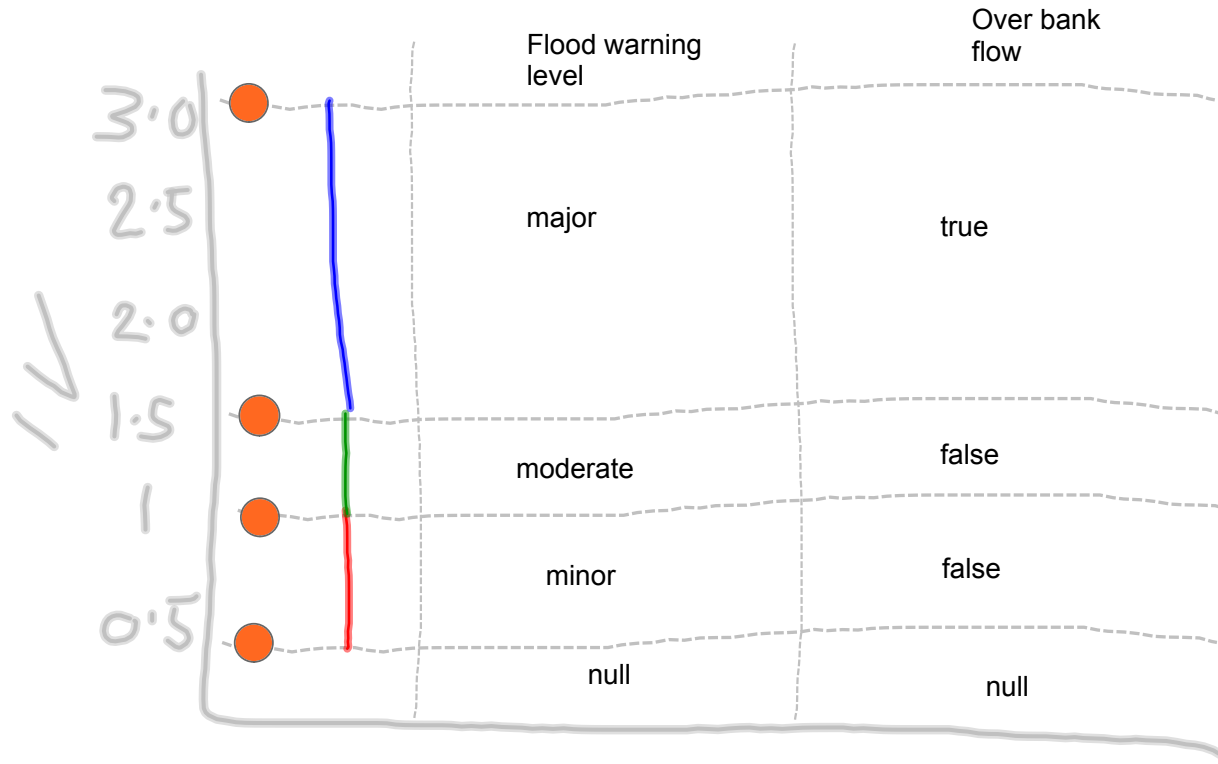
# RANGE VALUES

\* Only a single dimension  
as DV is not plotable

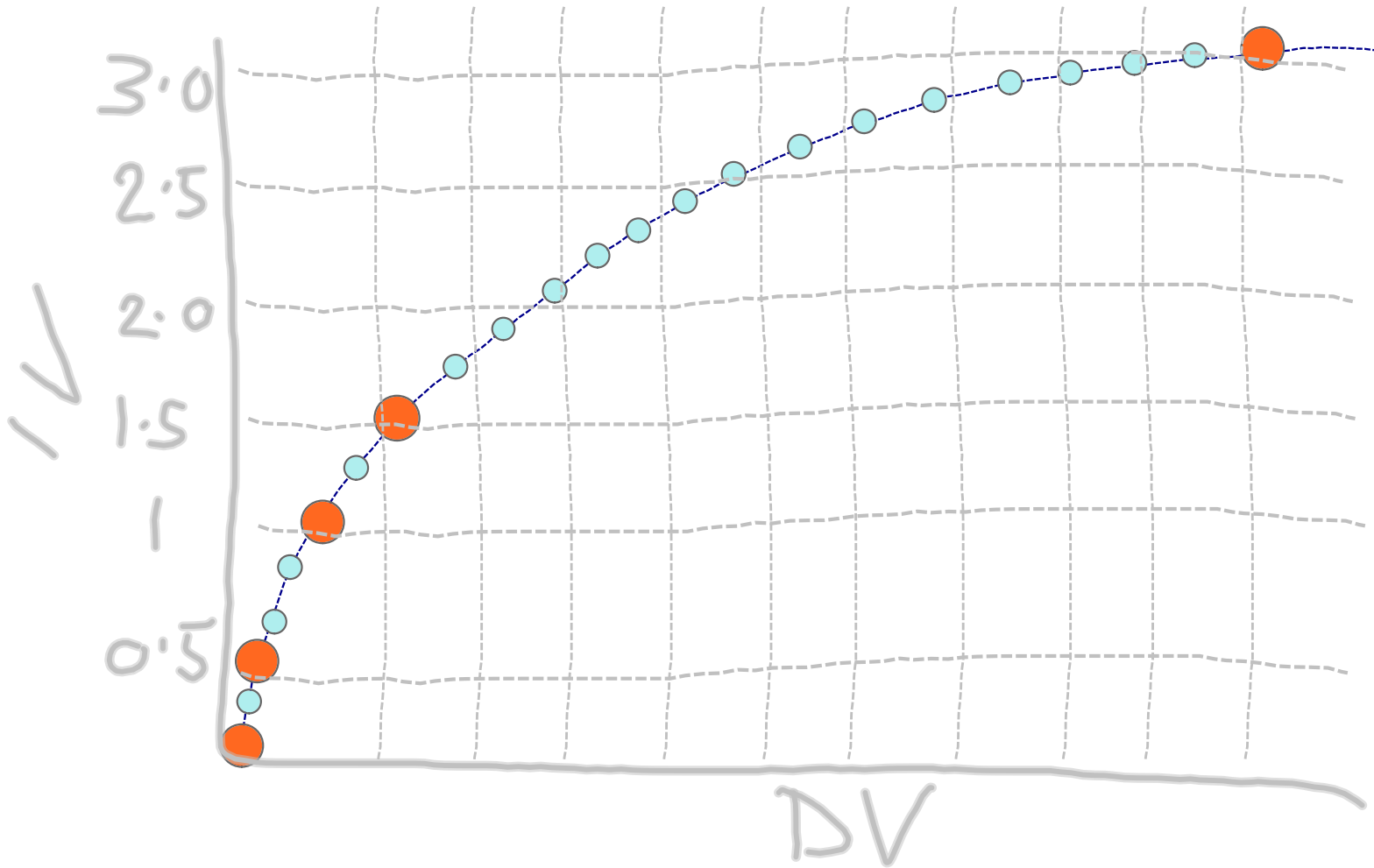


# RANGE VALUES

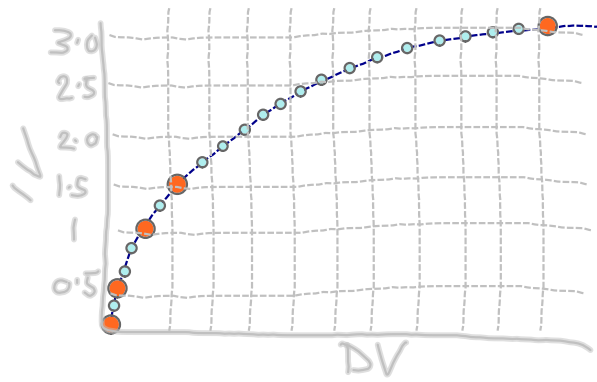
## Named ranges



# CONVERSIONS



# RANGE VALUES



# Named ranges

| IV  | DV   | Flood warning level | Over bank flow |
|-----|------|---------------------|----------------|
| 0.0 | null | null                | null           |
| 0.5 | null | null                | false          |
| 1.0 | null | minor               | false          |
| 1.5 | null | moderate            | false          |
| 3.0 | null | major               | true           |

Conversion table with named ranges  
 \* NOTE: CT attributes omitted for clarity

|                          |                          | <b>Named ranges</b> |                |
|--------------------------|--------------------------|---------------------|----------------|
| <b>IV</b>                | <b>DV</b>                | Flood warning level | Over bank flow |
| 0.0                      | x.x                      | null                | <b>false</b>   |
| Many intermediate values | Many intermediate values | null                | null           |
| 0.5                      | x.x                      | null                | <b>false</b>   |
| Many intermediate values | Many intermediate values | null                | null           |
| 1.0                      | x.x                      | <b>minor</b>        |                |
| Many intermediate values | Many intermediate values | null                | null           |
| 1.5                      | x.x                      | <b>moderate</b>     | <b>false</b>   |
| Many intermediate values | Many intermediate values | null                | null           |
| Many intermediate values | Many intermediate values | null                | null           |
| 3.0                      | x.x                      | <b>major</b>        | <b>true</b>    |

